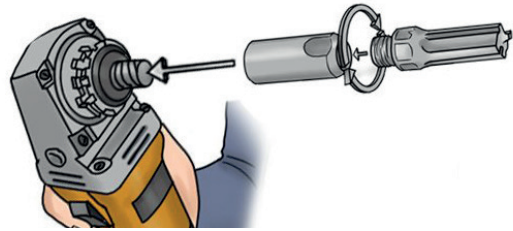


# Instruction manual

## Mortar Rake and Dust Trap

Strip the angle grinder down to the spindle.

Twist the adaptor onto the spindle using a spanner to tighten it on. Once you have screwed the adaptor onto the spindle, insert the mortar rake into the adaptor and twist to tighten.

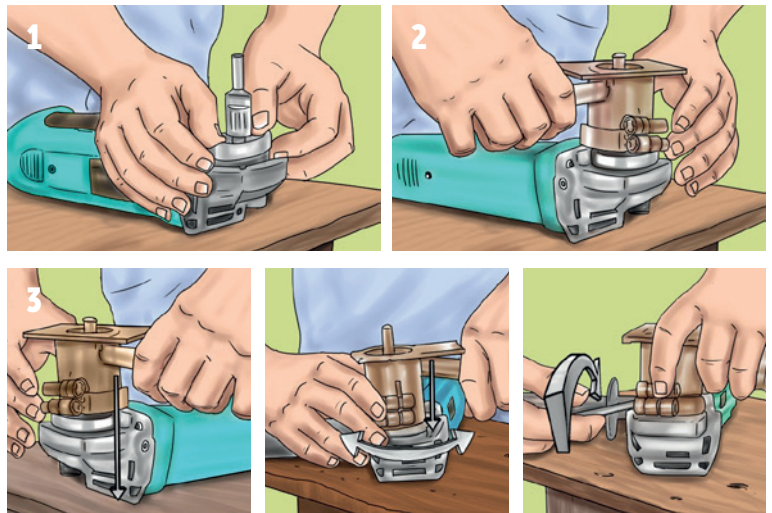


### Inserting the mortar rake dust trap

Step 1 – Place the adaptor/aluminium ring over the neck of the wheel guard collar.

Step 2 – Push the ring onto the guard collar of the angle grinder.

Step 3 – Push sole plate down. Make sure it is a snug fit, push the sole plate down over and onto the aluminium ring. Turn the sole plate onto the aluminium ring until it is properly fitted. You can tighten the sole plate onto the aluminium ring with a hex wrench.

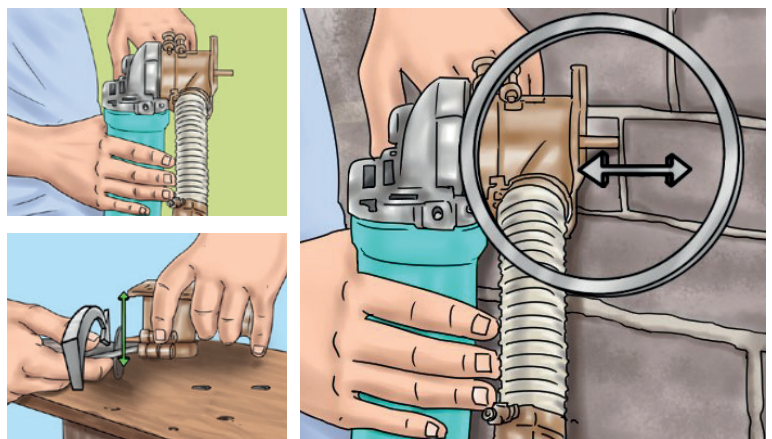


### Setting the raking depth

The sole plate provides the opportunity to set the raking depth.

Set the depth of the sole plate prior to attaching it to the angle grinder.

Check the depth of the sole plate once it is on the angle grinder, by measuring the distance between the tip of the mortar rake and the flat square base of the sole plate. This distance shows you the maximum distance you will be routing.



### Attaching a dust extraction unit

Once the sole plate is attached, you need to insert the outlet pipe into an industrial vacuum cleaner/dust extraction unit. This fits over the top of the outlet pipe.

